

TRANQUIL[®]
ALTICOR
Solid Surface

The incomparable beauty, originates in the unique performance of solid surfaces.

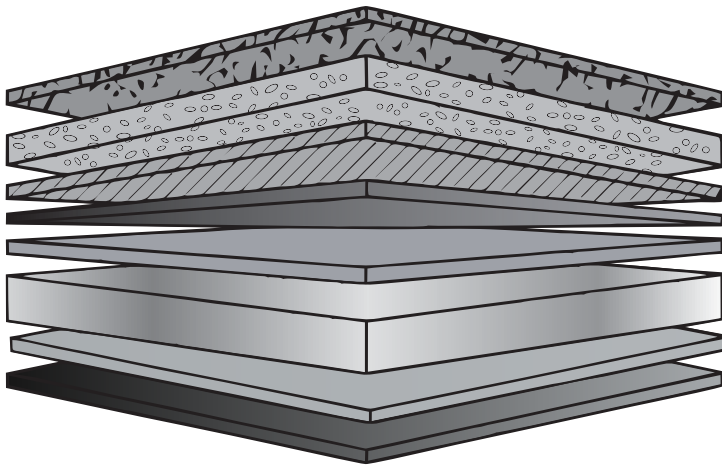
The design of the edges, inlays and the combination of colours exhibit elegance and vitality. Credible environment friendly material effectively prevent pollution and avoid bringing harm to human and nature. Altacor answers the need for a fine, budget friendly product to shape your dreams when it comes to straight applications.

Altacor- is manufactured in an advanced technology plant to maintain standards and quality.

ALTICOR *Solid Surface*

COMPOSITION

ALTICOR Solid Surface is made with a composition of PMMA+ MMA+ High Performance Polyester Resins, ATH, Poly Chips, Pigments, Binders, Additives etc. This gives Alticor a superior finish.





SHEET SPECIFICATIONS

SHEET SIZE

- 12 mm - 2440 x 760 mm - 20 SFT
- 6 mm - 2440 x 760 mm - 20 SFT
- Sizes can be customized*

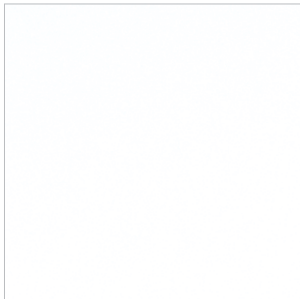
WEIGHT

- 12 mm - App. 40 Kgs
- 6 mm - App. 20 Kgs



ALTICOR *Solid Surface*

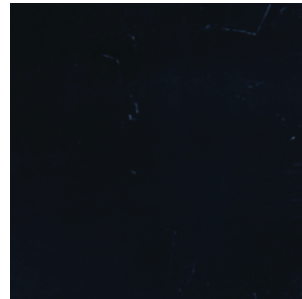
COLOUR PALETTE



A001 Snow White



A002 Pearl



B001 Black Night



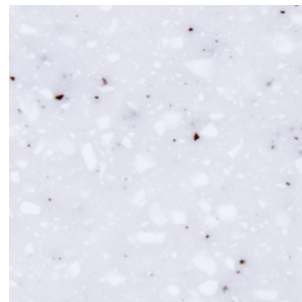
A003 White



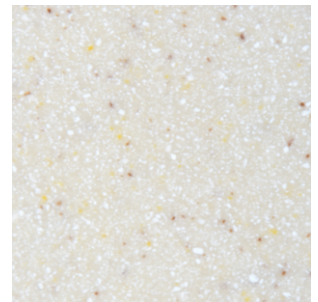
B002 Cherry



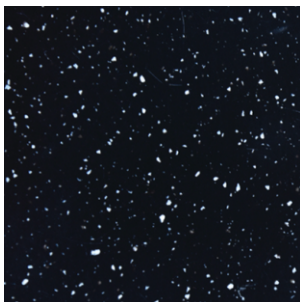
B003 Banana



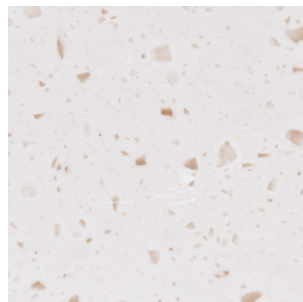
C002 White Sand



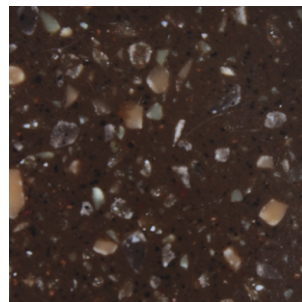
C003 Golden Sand



C004 Pitch Black



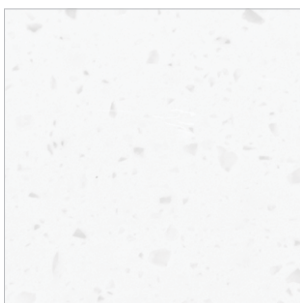
C005 Snow Pearl



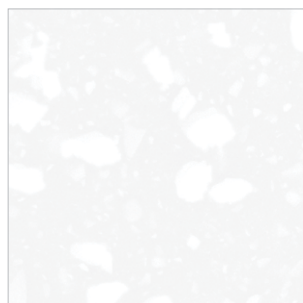
D001 Confetti



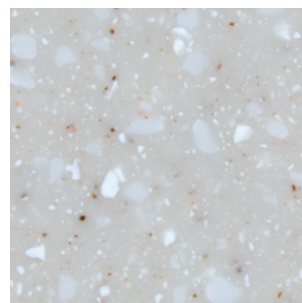
D002 White Pearl



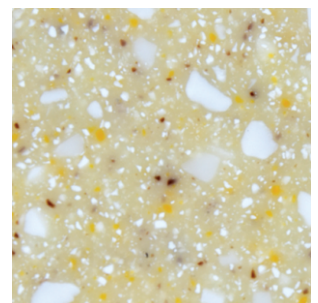
D003 White Aspen



D004 Peeble Ice



D005 Elegant



D006 Sparrow Feather

**The product color may vary due to photographic lighting sources.*



TECHNICAL DATA SHEET

PROPERTY	UNIT	RESULT	TEST METHOD
Specific Gravity (23/23 (°C))	-	1.88	ASTM D792-13 (Method A)
Rockwell Hardness (HRM)	-	83	ASTM D785-08 (2015) (Procedure A)
Tensile Strength	Mpa	33.3	ASTM D638- 14 (*)
Tensile Modulus of Elasticity	Gpa	9.24	ASTM D638- 14 (*)
Flexural Modulus	Mpa	64.9	ASTM D790- 15e2 (**)
Flexural Modulus of Elasticity	Gpa	9.56	ASTM D790- 15e2 (**)
Izod Impact Strength	J/m	32	ASTM D256-10e1 (Method A)
Water Absorption	%	0.15	ASTM D570-98(2010)e1(24h Immersion)
Density (23 ° C)	g/cm3	1.87	ASTM-D792-13 (Method A)
Appearance ((Discoloration) after Heat ((170 +_2)	-	No Defects	By The Client
Hear Water Resistance	-	No Defects	JIS K 6902 : 2007
Deflection Temperature Under Load (1.82 MPa)	-	65	ASTM-D648-16 (Method B)
Thermal Expansion	1 / ° C	4.3X10	KS M 3015 : 2003
Pencil Hardness (Mitsu-bishi Pencil)	-	8H	KS D 6711 : 2012
Wear and Cleanability		Passes	
Stain Resistance: Sheets		Passes	
Fungus and Bacteria Resistance		Does not support microbial growth	
Chemical resistance		pass(refer chemical resistance chart)	
Boiling Water Resistance		No visible change	

*Test Speed : 5mm/min (Modulus : 1mm/min), Test Speciman : Type I

**Test Speed : 1.1mm/min, Support Span : 90mm

The Information is designed to provide support in fabrication, installation and or to ensure performance of Altacor Solid Surface. This information is intended for person or persons having knowledge of this technical area. None of the contents including, but not limited to the instructions, recommendations and graphics, technique and guidelines should be understood as implying of legal, warranty or any types of liability by manufacturer and its affiliates/associates.



CARE & MAINTENANCE

- Wipe clean with damp cloth/sponge. When basic stains occur, clean with mild detergent or general all purpose cleaning agent. Ensure periodically to use mild abrasive cleanser in round motion to maintain its uniform appearance and shine.
- Heat damage: Avoid placing hot items directly on the Alticor solid surface. Always use trivetlets or rubber mats/ steel plates etc to avoid direct contact of the hot substances with the solid surfaces.
- Avoid direct contact of Alticor with strong chemicals that can cause damage like oven cleaners, paint remover etc. If exposed immediately rinse with water. Continuous contact with tough/ harsh chemicals can cause damage to Alticor surfaces.. Refer chemical resistance chart before installation.
- Removals of stains/ scratches: To remove mild stains, scratches, scrub the area in round motion with mild abrasive cleaner. Deep scratch, stains or other damages will require professional attention and get in touch with the local Alticor certified fabricator.
- Always use cutting board to avoid direct contact with the Alticor surfaces.

